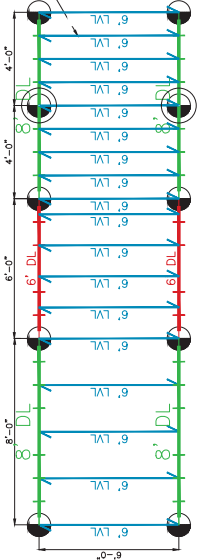
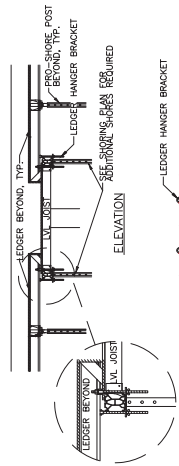


TYPICAL PRO-SHORE SECTION
(MAX. SLAB THICKNESS)



TYPICAL PRO-SHORE PLAN VIEW

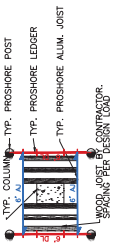
ALWAYS VERIFY THE POST SPACING HAVE ADEQUATE SUPPORT THE DESIGN LOAD AT (INSTALLED) HEIGHT.



LEDGER HANGER DETAIL



COLUMN FILLER TYPE 1



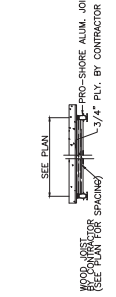
COLUMN FILLER TYPE 2



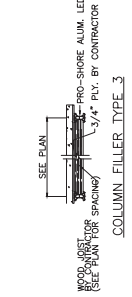
COLUMN FILLER TYPE 3



COLUMN FILLER TYPE 1

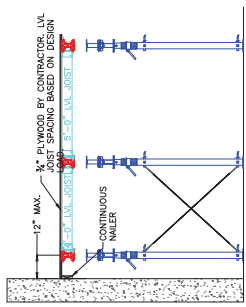


COLUMN FILLER TYPE 2

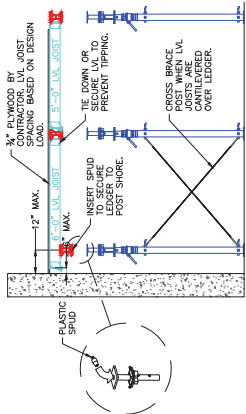


COLUMN FILLER TYPE 3

OFFSET COLUMN FILLER DETAILS

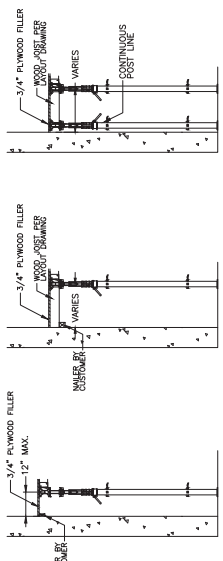


PRO-SHORE CANTILEVER AT WALL EDGE

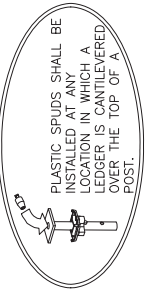


STANDARD COLUMN FILLER DETAILS

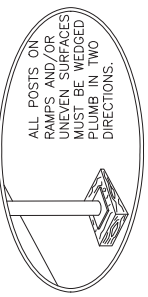
PRO-SHORE JOIST CANTILEVERED OVER LEDGER AT WALL EDGE



FILLER WITH WALL SUPPORT DETAILS



PRO-SHORE CANTILEVER OVER POST



PRO-SHORE TYPICAL DETAILS

ALL SYMONS COMPONENTS AND ACCESSORIES ARE DESIGNED WITH SAFETY AND PERFORMANCE IN MIND. THE APPLICATION NOTES ON THIS SHEET WILL HELP YOU ACHIEVE A SAFE AND PRODUCTIVE FORMING OPERATION. IT IS RECOMMENDED THAT ALL CONSTRUCTION PERSONNEL THOROUGHLY FAMILIARIZE THEMSELVES AND COMPLY WITH THE APPLICABLE INDUSTRY STANDARDS AND SAFE PRACTICES ESTABLISHED BY THE AMERICAN CONCRETE INSTITUTE, AMERICAN NATIONAL STANDARDS INSTITUTE, THE OCCUPATIONAL SAFETY AND HEALTH ADMINISTRATION, AND THE SCAFFOLDING, SHORING, AND FORMING INSTITUTE.

SYMONS
BY DAYTON SUPERIOR
1125 BYERS ROAD
MAMISSBURG, OH 45342
For Customer Service or Technical Assistance call your representative at: 1-800-800-7966
WWW.DAYTONSUPERIOR.COM

MEMBER OF FORMING INSTITUTE, INC.

IMPORTANT SAFETY NOTE-
ALL FORMING AND SHORING COMPONENTS MUST BE INSPECTED REGULARLY FOR DAMAGE OR EXCESSIVE WEAR. IF ANY DAMAGE OR WEAR IS OBSERVED, THE COMPONENTS MUST BE REPLACED IMMEDIATELY.
PLEASE REFER TO ALL RELATED MATERIAL AND CONTACT SYMONS FOR ANY QUESTIONS IF UNSURE OF PROPER PROCEDURES AND/OR USE.

CUSTOMER FORM DIRECT	JOB NAME 77 BAY ST
LOCATION PORT MELBOURNE, VIC, AUSTRALIA	JOB PHASE FLOORS 1-3 GRIDS C-D
DRAWN E.W.	DATE 03/03/16
CHECKED A.J.	DATE 03/03/16
DRAWING SUBJECT TYPICAL DETAILS	EPD - # 16-0261
ACCT. MANAGER G.W.	SHEET # 0.03